

## Geography Overview

Energy cannot be created or destroyed but can be transferred from one store to another. Much of the world's energy is produced by burning fossil fuels such as oil, coal and gas. These natural resources are formed from the remains of plants and animals that died millions of years ago and are **non-renewable**. They are used to power everything from planes to gas cookers. Renewable energy is a natural source of energy that will never run out. Wind, the sun and water are renewable energy sources that can be used to create electricity. We use energy to light and heat buildings, to provide electricity to make appliances work and to power most modes of transport and machines.

## Key Vocabulary

biofuel

coal

consumption

contour line

crude oil

dam

emissions

energy

fossil fuel

source

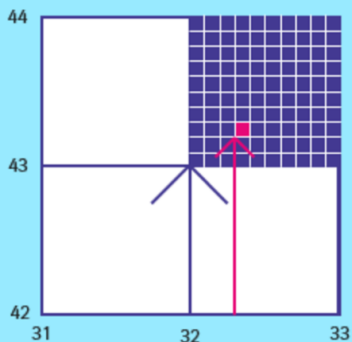
hydropower

natural gas

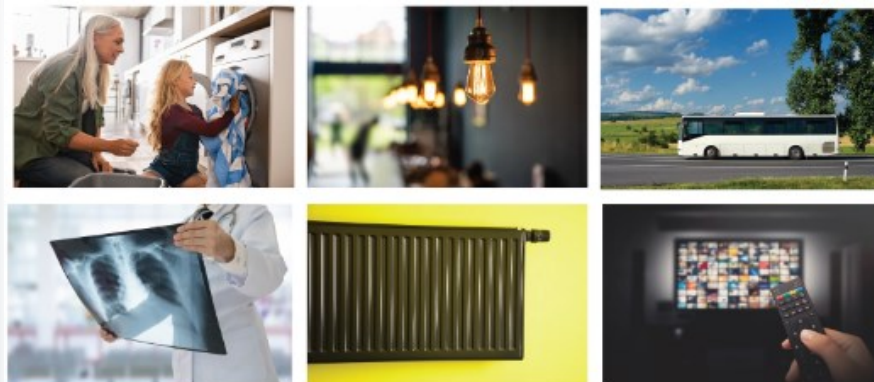
non-renewable

nuclear power

producer



323, 432



# Where does our energy come from?

## Key Knowledge

Natural resources can be used to make energy.

The UK relies mostly on gas and oil and now uses less coal. Wind power is the most widely used renewable source.

The USA relies heavily on fossil fuels. Wind and hydropower are the most widely used renewable source of energy.

Contours on a map show height and slope.

Qualitative data involves qualities, characteristics and is largely opinion based and subjective.

The Prime/Greenwich Meridian is a line of longitude which goes through 0 and determines the start of the world's time zones.

Renewable



hydropower

Energy generated by the movement of water.



wind power

Energy generated by wind powering large turbines.



geothermal energy

Energy generated by the heat from the Earth's core.



solar power

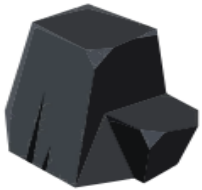
Energy generated by the sun and solar panels.



biofuel

Energy generated from plant or animal waste.

Non-renewable



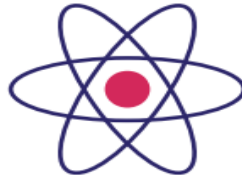
coal

A black rock found deep underground which is used as fuel.



crude oil

A naturally occurring liquid made millions of years ago, found underground.



nuclear power

A highly-flammable mixture of gases found deep underground.



natural gas

Energy generated from radioactive materials that create heat.